



Review & How to Use:

2K ULTRA GLOSS VARNISH

*A complete guide
step by step*

by Edwing Merlo

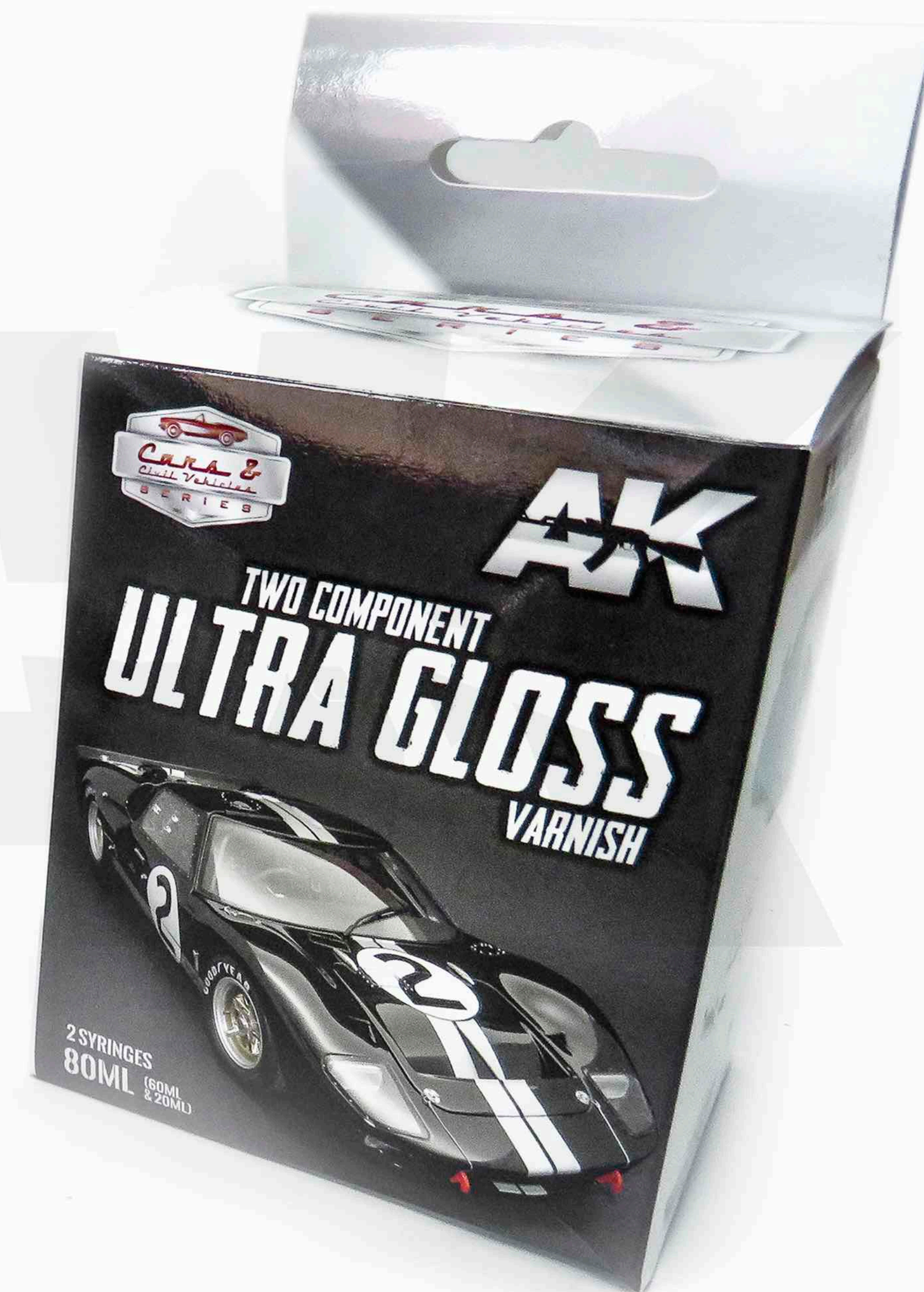
emp Modeler
www.empmodeler.com



Set Content



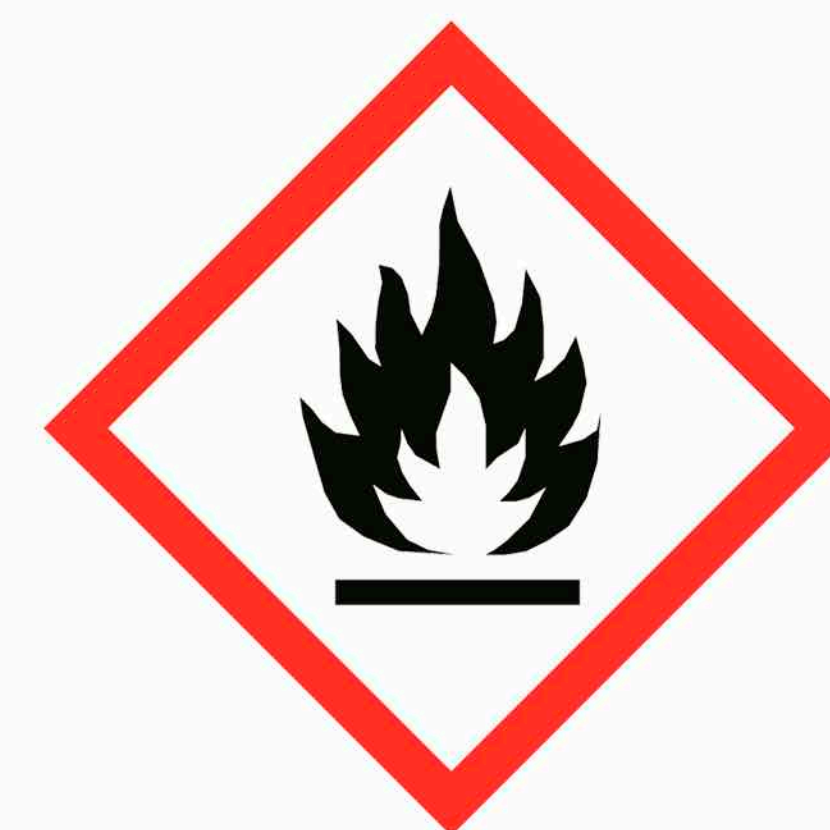
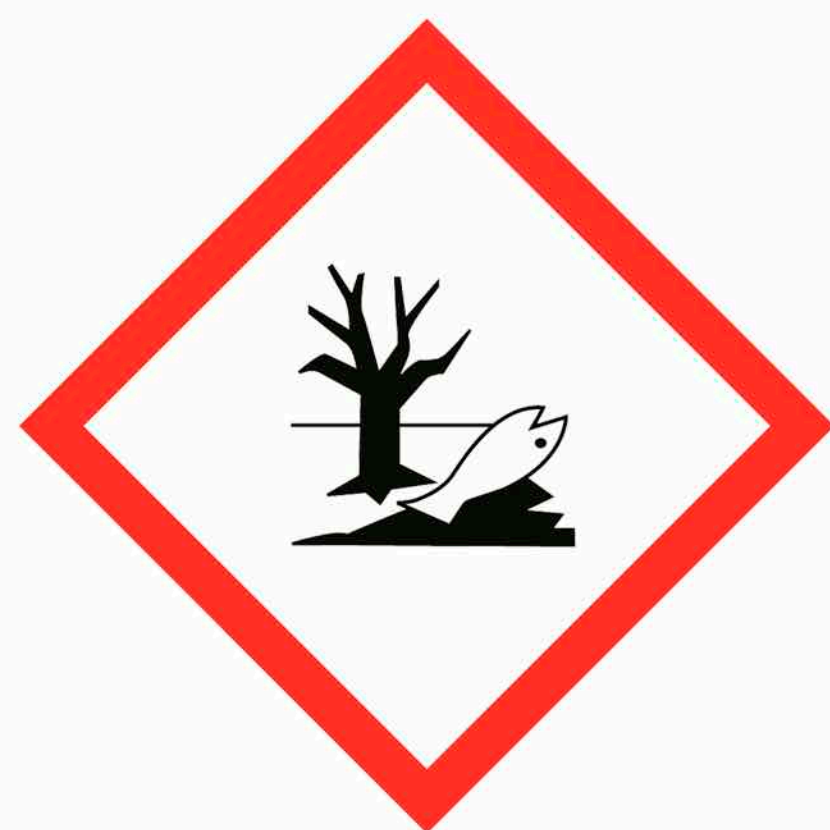
Example model before varnishing



The set includes:

- Number 1 - Varnish 2K bottle (60 ml)**
- Number 2 - Thinner bottle (60 ml)**
- Number 3 - Hardener bottle (20 ml)**
- Syringes (2 units)**

Security Measures



VERY IMPORTANT

THIS IS A PROFESSIONAL AUTOMOTIVE PRODUCT. ITS USE IS HARMFUL TO HEALTH AND THE ENVIRONMENT. FOLLOW THE SAFETY REGULATIONS AND RECOMMENDATIONS FOR USE.

Previous Steps



***It is highly recommended to clean the part with a degreasing product for plastics, to prevent possible contamination of the varnish with silicones or fatty agents.
The product used in this example is of the generic type.***

Mixing Process



STEP 1



5 mL

STEP 2



2 mL

STEP 3



***3 mL**

Varnish



Hardener



Thinner



Product mix, approximate, to varnish a car model up to the 1/20 scale, or a 1/12 motorcycle.

*** The amount of solvent is only indicative and varies depending on the needs.**

BASIC PROPORTION 3 : 1 (For every three parts of varnish, add one hardener)

Next Step



After removing the components, the mixture should stand for 15 minutes

Varnishing: Base Coat



To begin the varnishing process, apply a very thin coat of lacquer over the entire piece. This layer will have a matte appearance and will serve as support for the following coats.

The application must be done with a uniform and horizontal movement, without pausing in each pass to avoid product accumulation, and at a distance of approximately 20 centimeters.

The piece should be allowed to dry for 5 minutes.

Varnishing: Gloss Coat



To apply the gloss coat, the varnish should be done from top to bottom, starting from the top of the piece until it is completely covered.

Spraying should be done with uniform, horizontal movements, from right to left and from left to right, and without stopping or pausing each spray to avoid lacquer buildup.

Once the process is complete, the drying time will be 15 minutes before applying another coat.

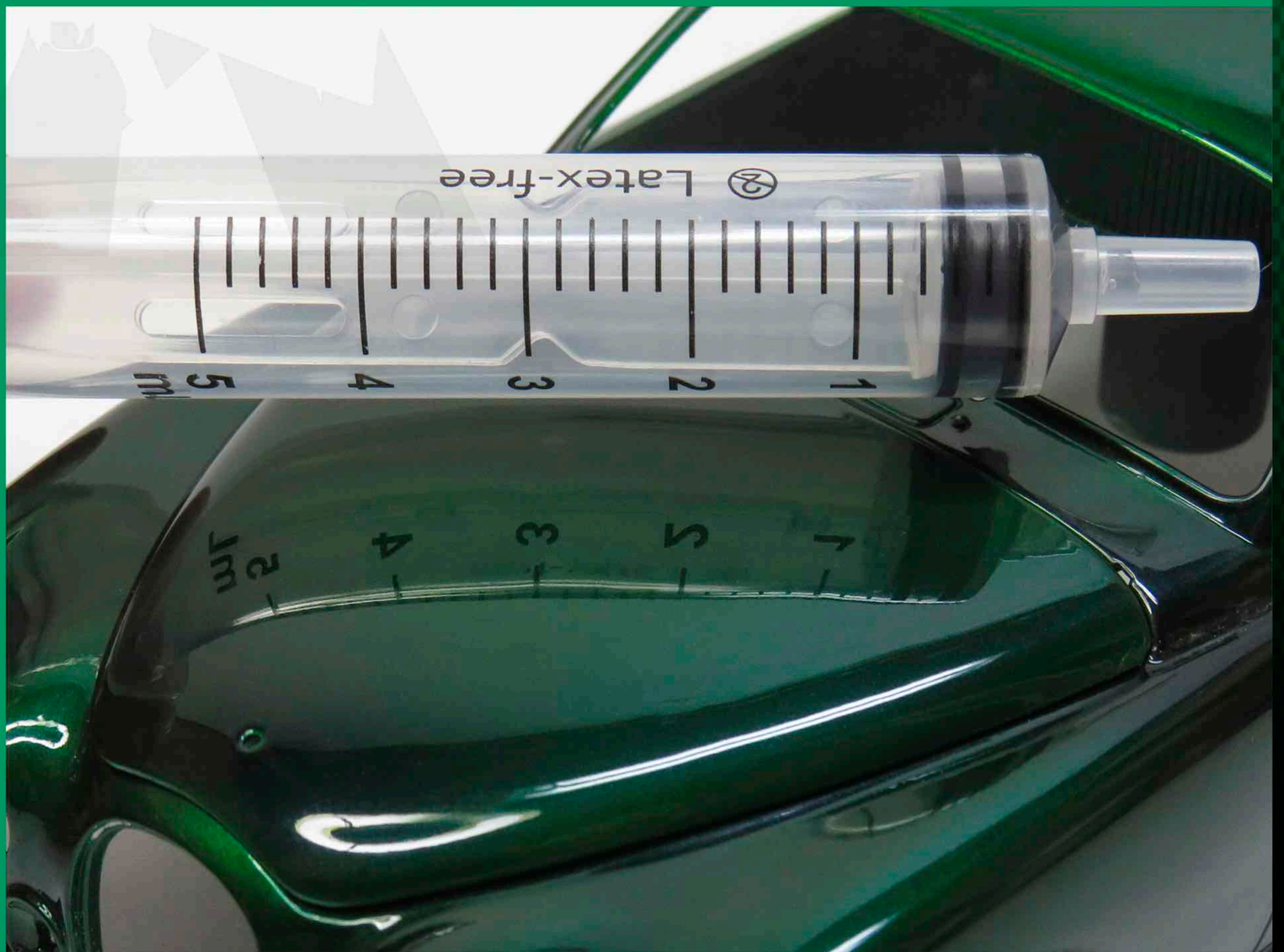
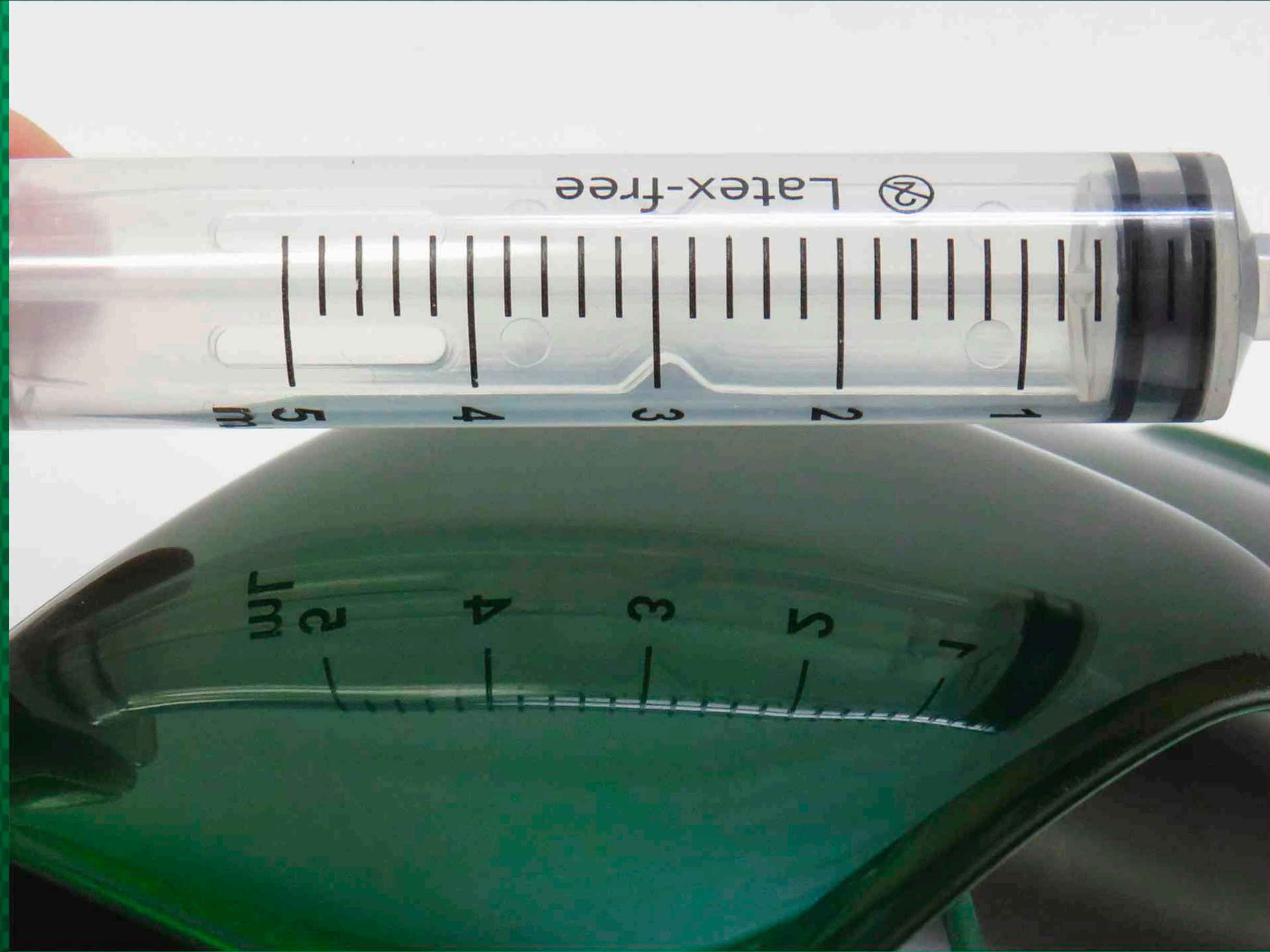
Last Step



After applying the last coat, let dry a minimum of 24 hours in a covered place, protected from dust and moisture.

Final Finish

AK



Final Finish

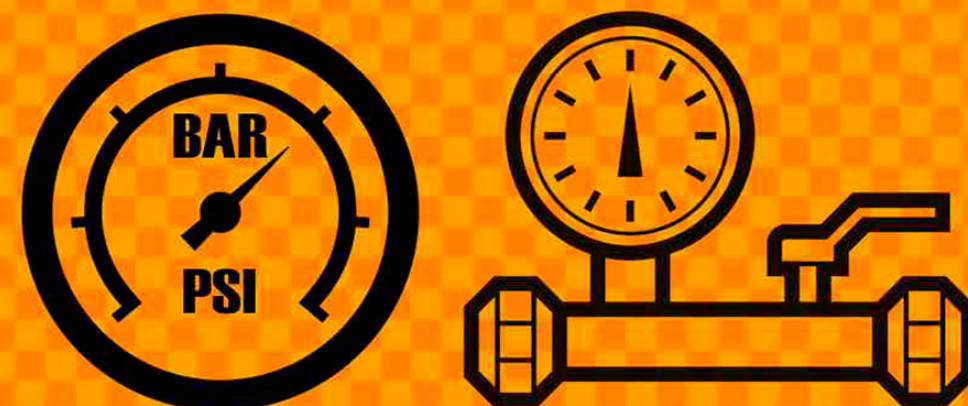
AK



Recommendations for use



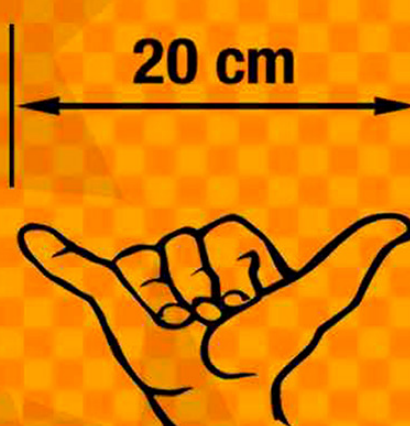
Recommended air pressure:
2 - 3 BAR / 30 - 40 PSI



Use only in well ventilated areas



Place the airbrush at a minimum distance
of, approximately, **20 cm** from the model.

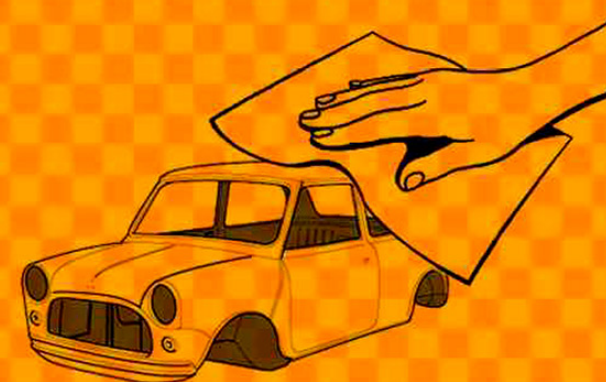


Ideal ambient temperature, for working
and drying, between **20°C** and **22°C**.



Before starting to varnish, it is necessary
to clean all the parts with a degreaser for
specific automotive plastics.

White cleaning vinegar also serves this
purpose.



It is very important to keep these
products in a cool place, away from the
sun, the weather and temperature
changes.



When pouring the components into the container where the mixture will be made, it is recommended to use paint filters provided with nylon mesh (150 - 190 microns), to prevent any residue from depositing in the airbrush and can obstruct it.

