



EstesRockets.com

BLUE ORIGIN NEW SHEPARD

7315



MODEL ROCKET INSTRUCTIONS

KEEP FOR FUTURE REFERENCE

IMPORTANT: Please record date found on decal and keep for future reference. _____

READ ALL INSTRUCTIONS. Make sure you have all parts and supplies. Test fit all parts before applying glue.

SUPPLIES



SCISSORS



PENCIL



RULER



FINE SANDPAPER



MEDIUM CA GLUE



YELLOW GLUE



WAX PAPER



HOBBY KNIFE



MASKING TAPE



PRIMER



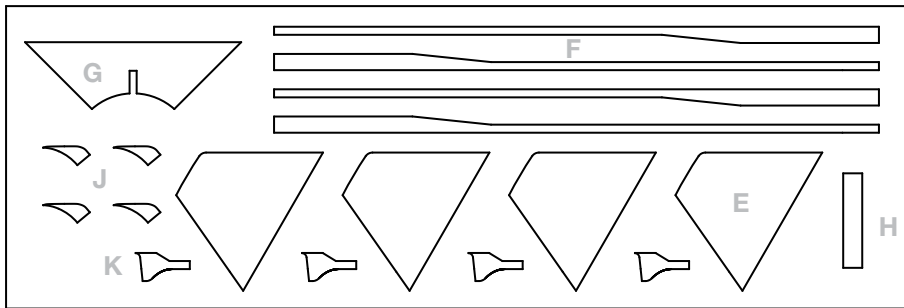
CLEAR COAT (OPTIONAL)



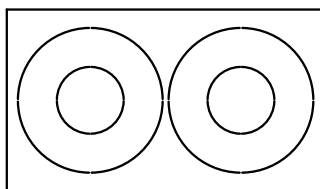
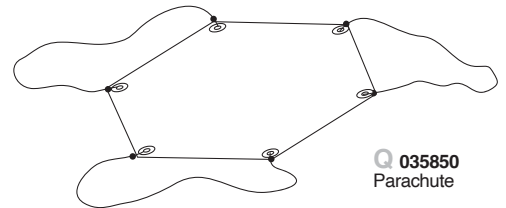
PAINT (WHITE)



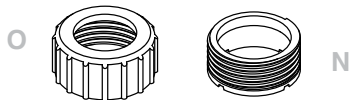
SAND BLOCK



E/F/G/H/J/K 090051-7315
Laser cut balsa sheet



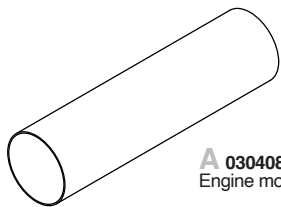
C 030128
Laser cut card stock



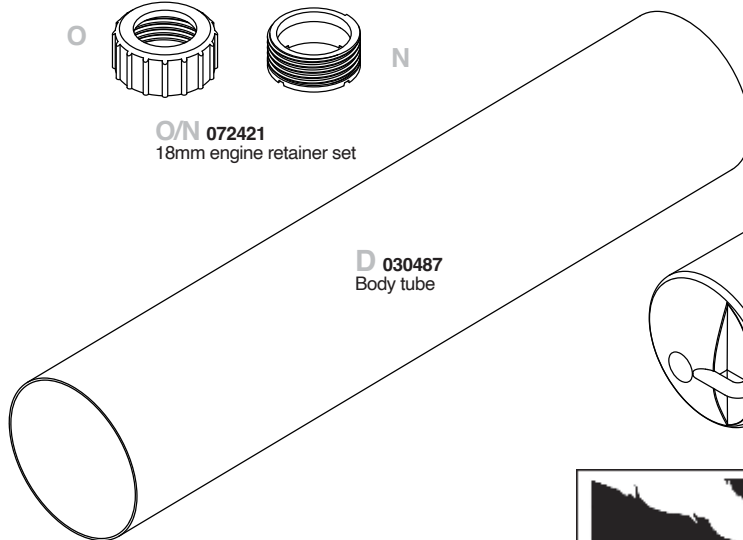
O/N 072421
18mm engine retainer set



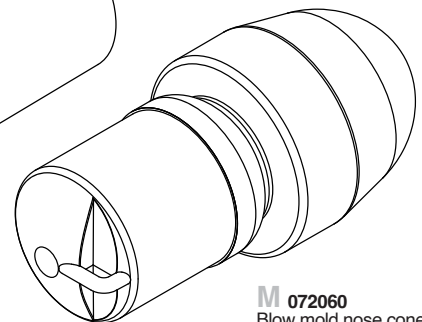
P 038362
Shock cord



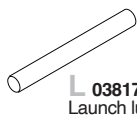
A 030408
Engine mount tube



D 030487
Body tube



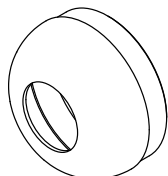
M 072060
Blow mold nose cone



L 038175
Launch lug



B 030162-2
Green engine block



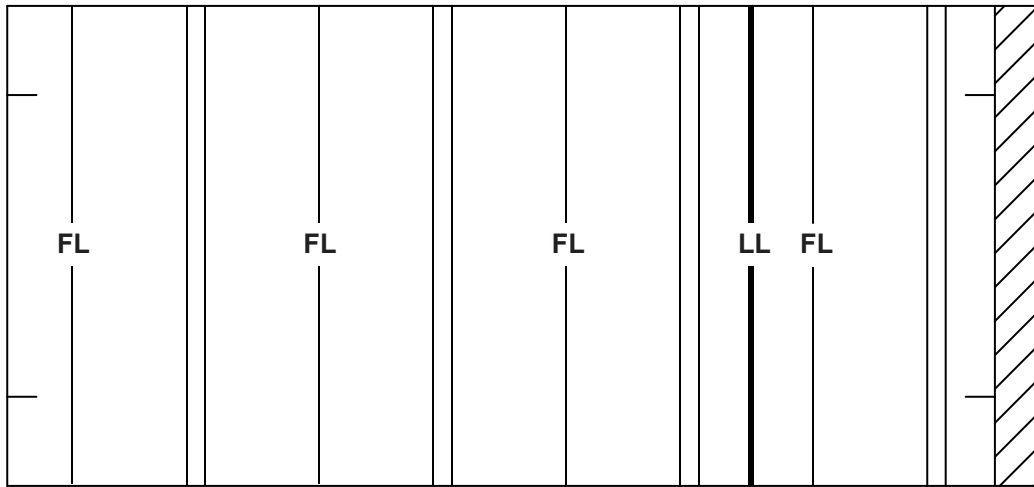
I 072061
Plastic tail cone

090001-7315
Waterslide decal



TUBE MARKING GUIDE AND SHOCK CORD MOUNT

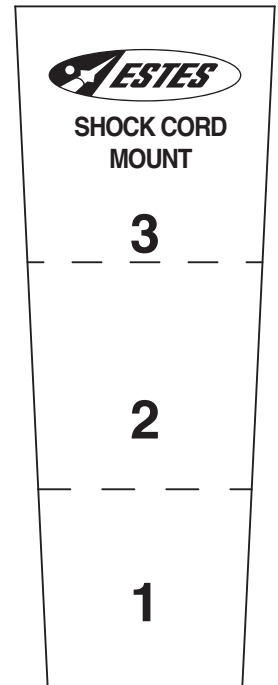
Make a copy if you want to keep instructions.



TUBE MARKING GUIDE

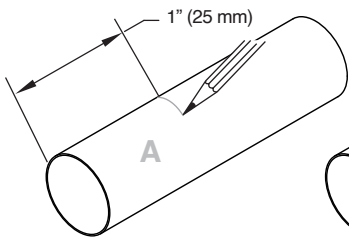
NOTE:

Make a copy if you want to keep instructions.

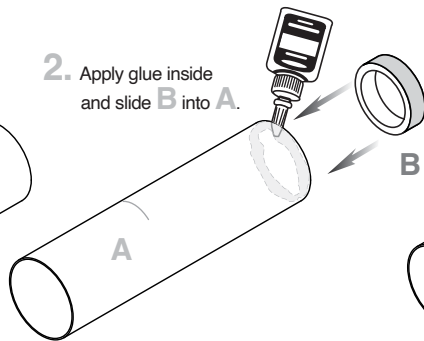


ASSEMBLE ENGINE MOUNT

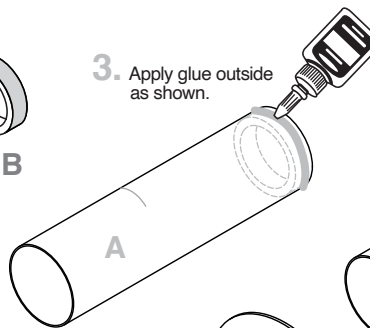
1. Mark **A** as shown.



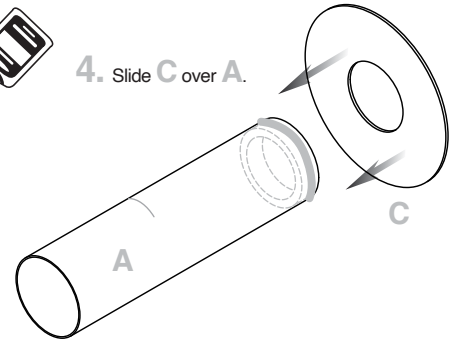
2. Apply glue inside and slide **B** into **A**.



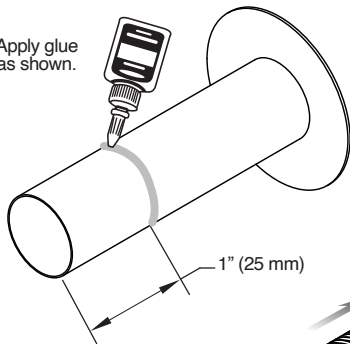
3. Apply glue outside as shown.



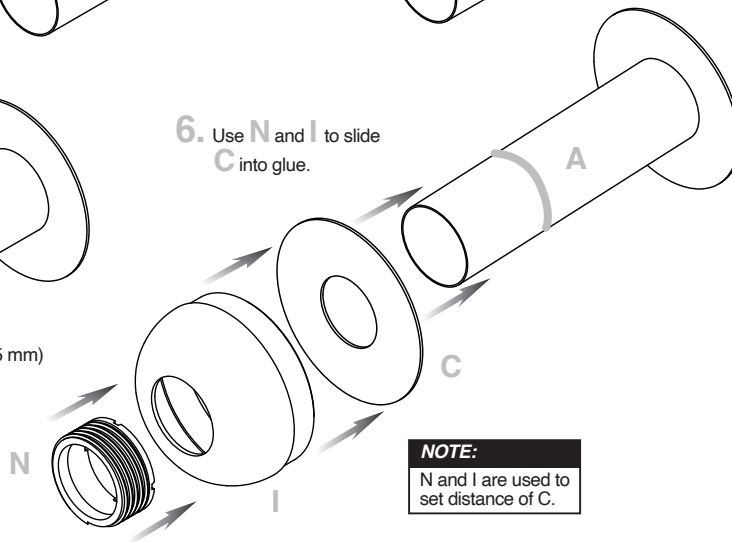
4. Slide **C** over **A**.



5. Apply glue as shown.



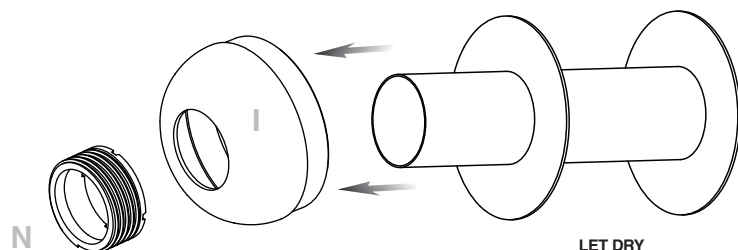
6. Use **N** and **I** to slide **C** into glue.



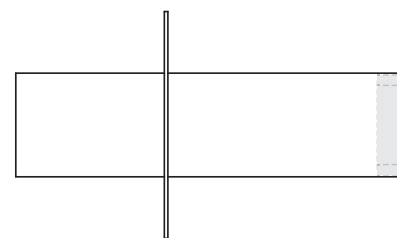
NOTE:

N and **I** are used to set distance of **C**.

8. Remove **N** and **I**.

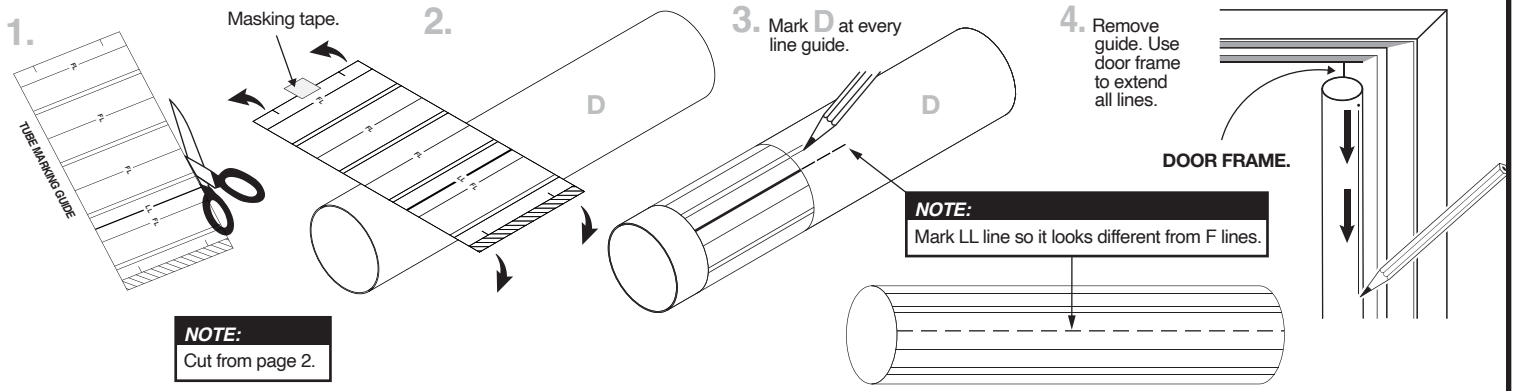


LET DRY



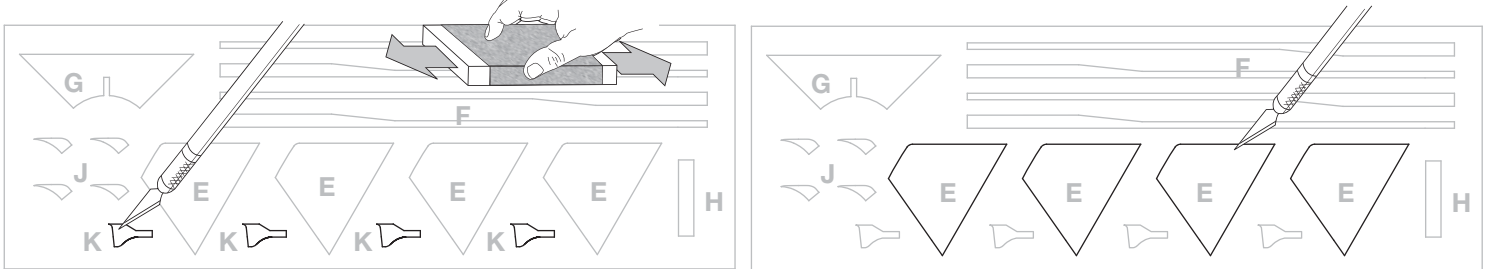
SIDE VIEW

MARK BODY TUBE

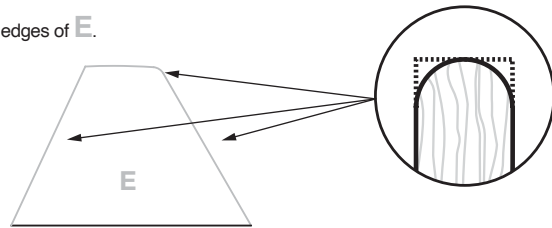


PREPARE FINS

1. Lightly sand both sides of balsa sheet.
2. Remove all K's. Prime, paint, set aside to dry.
3. Carefully remove E with hobby knife.



4. Round these edges of E.



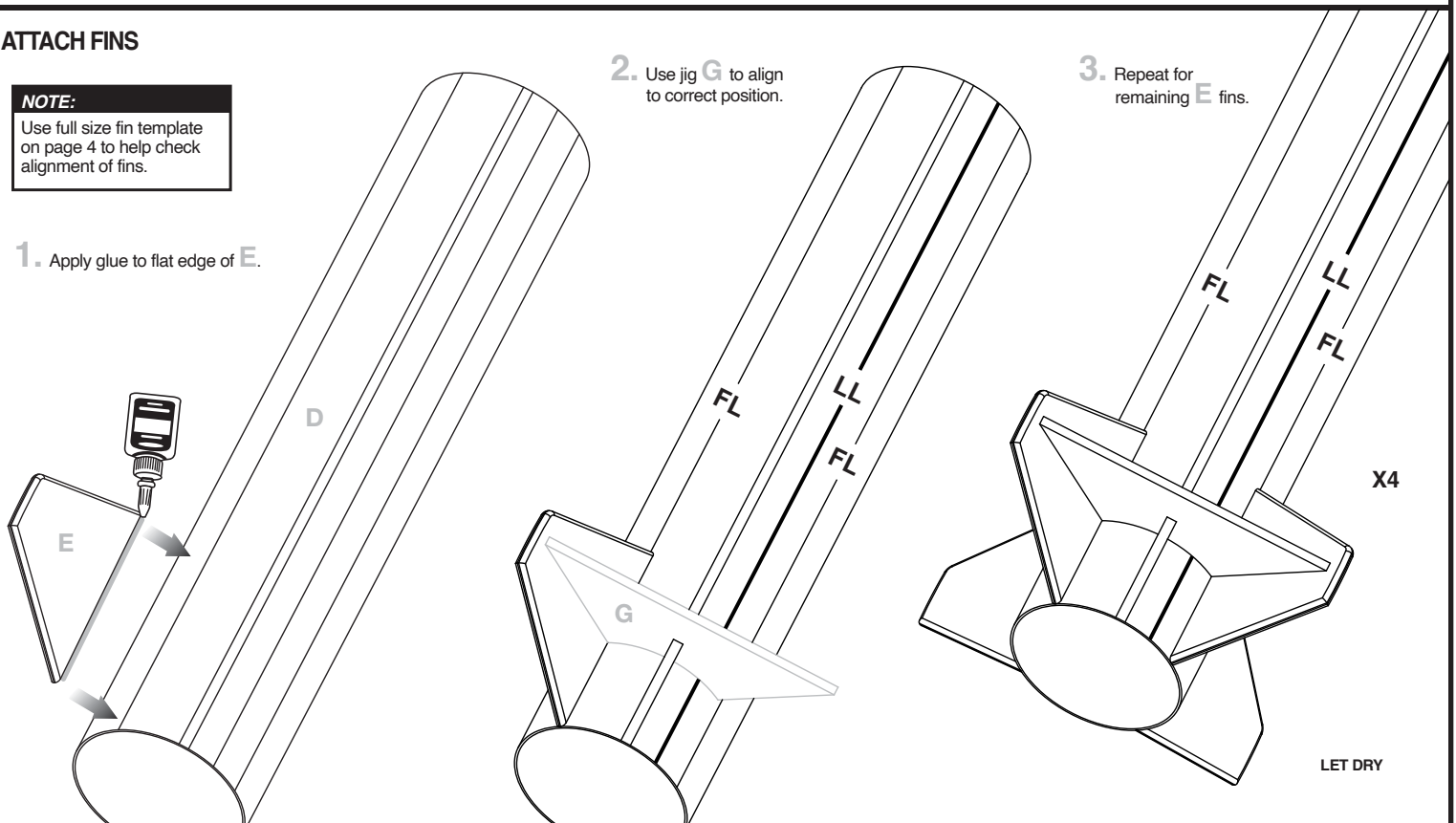
ATTACH FINS

NOTE:
Use full size fin template on page 4 to help check alignment of fins.

1. Apply glue to flat edge of E.

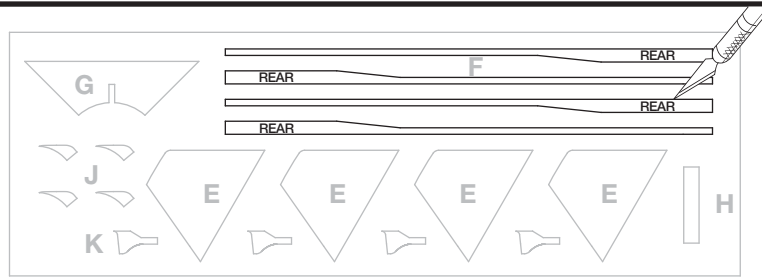
2. Use jig G to align to correct position.

3. Repeat for remaining E fins.



ATTACH BODY TUBE DETAILS

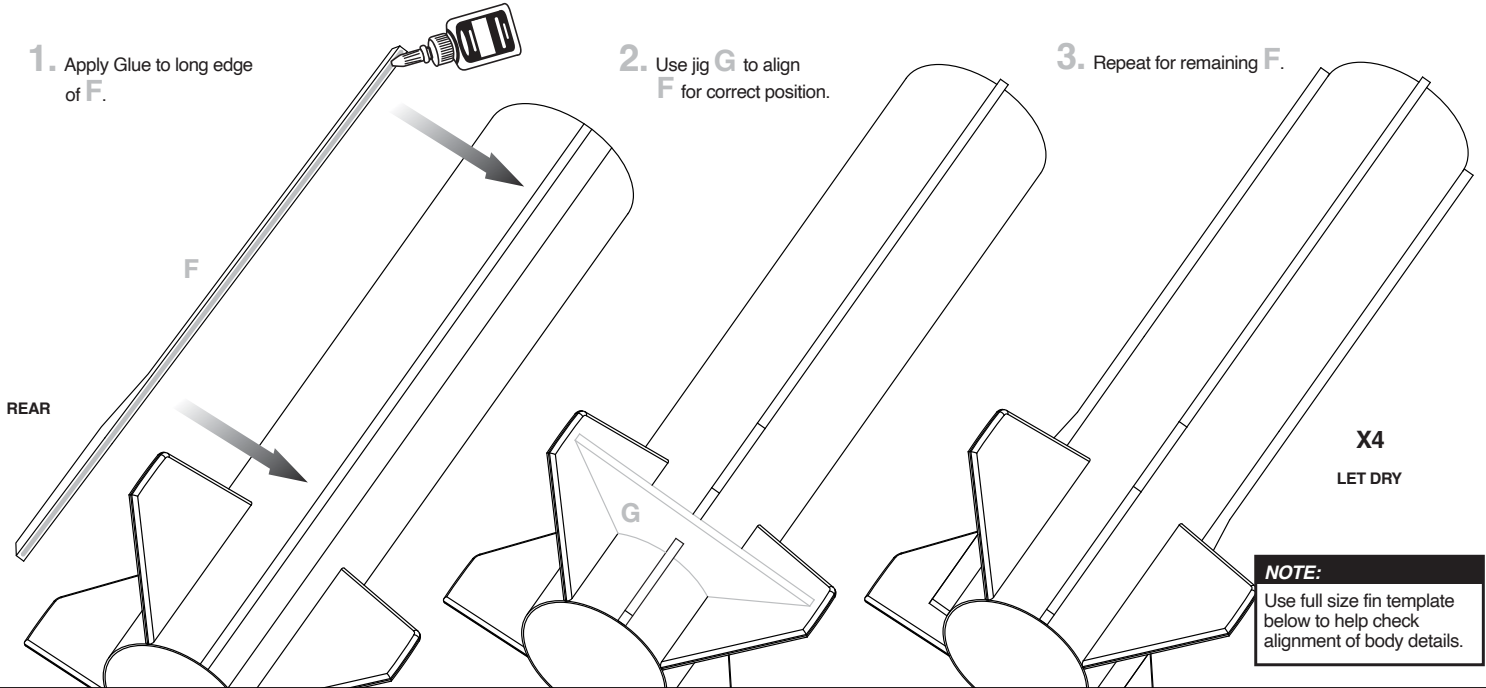
1. Carefully remove **F** with Hobby Knife.



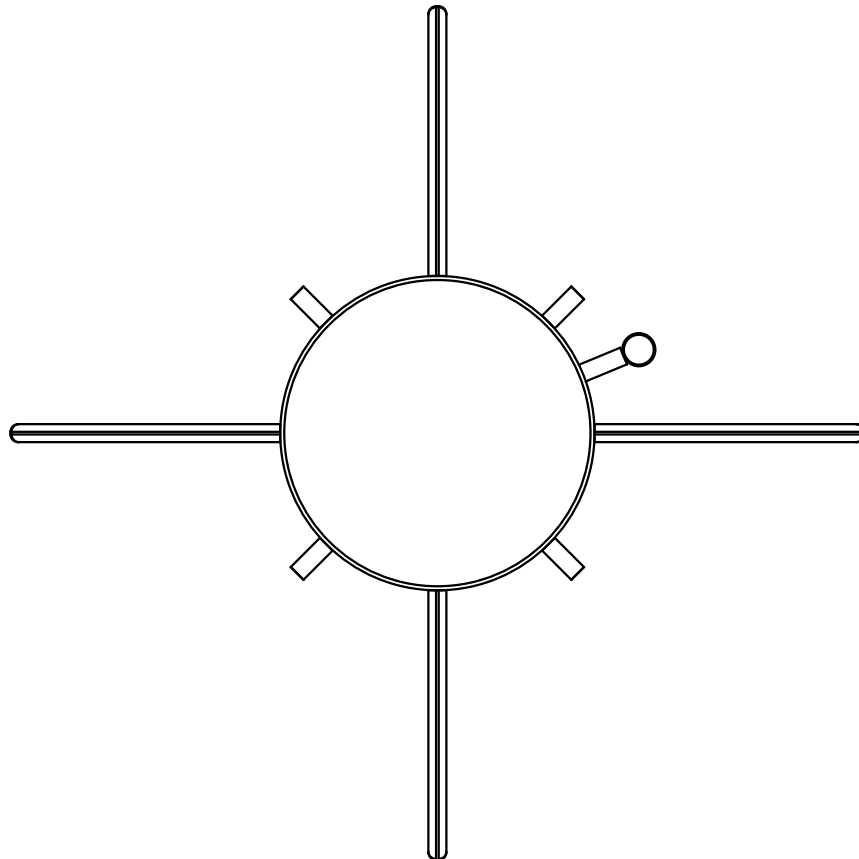
1. Apply Glue to long edge of **F**.

2. Use jig **G** to align **F** for correct position.

3. Repeat for remaining **F**.

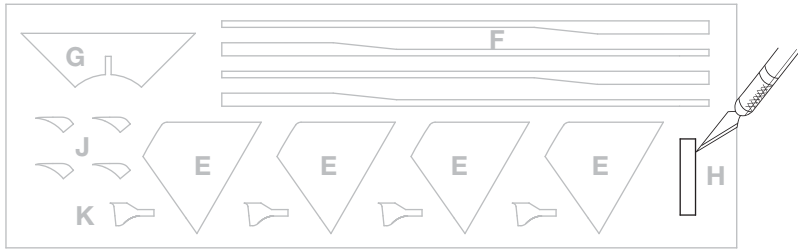


FULL SIZE FIN TEMPLATE

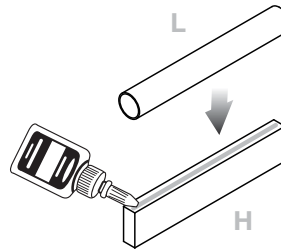


ATTACH LAUNCH LUG

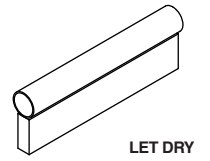
1. Carefully remove H with hobby knife.



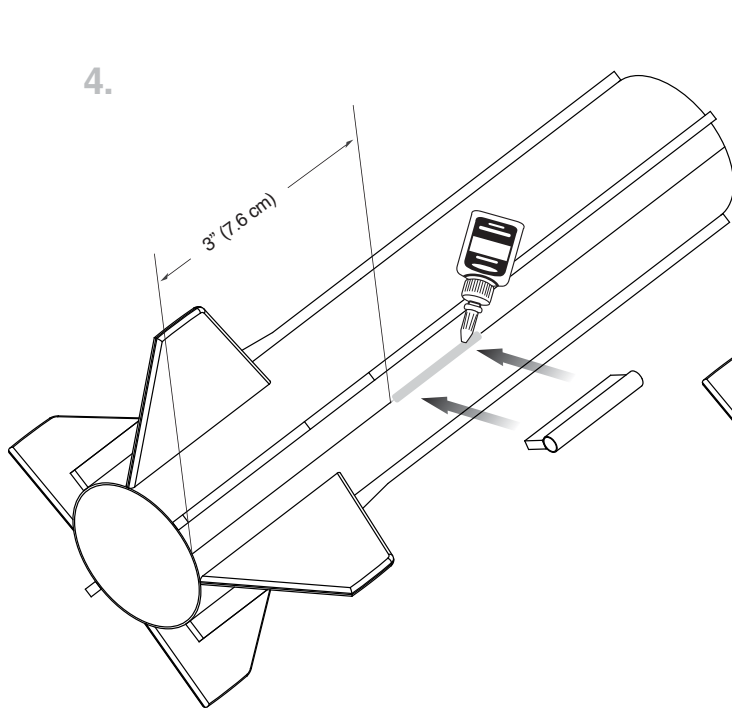
2.



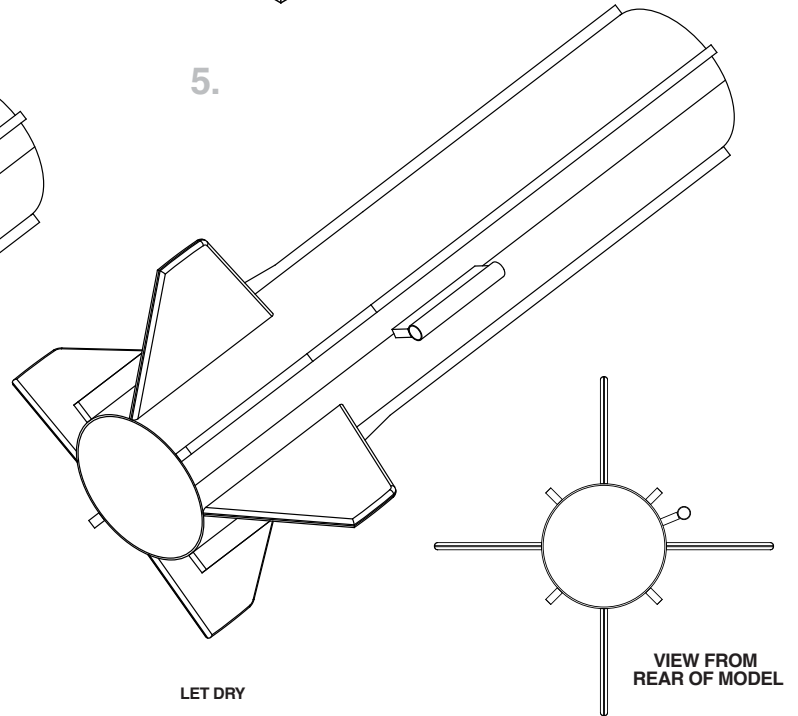
3.



4.

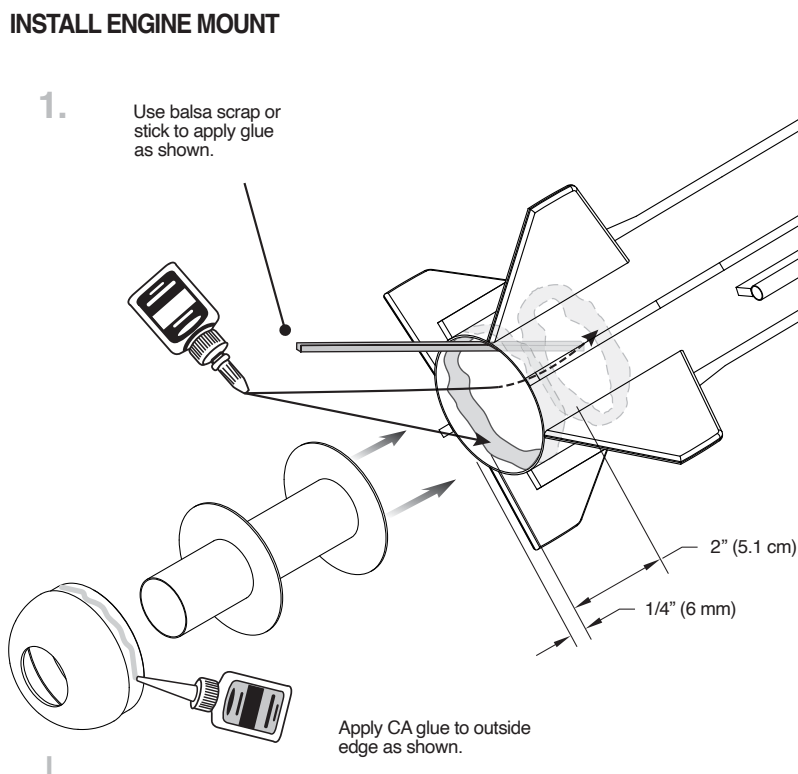


5.

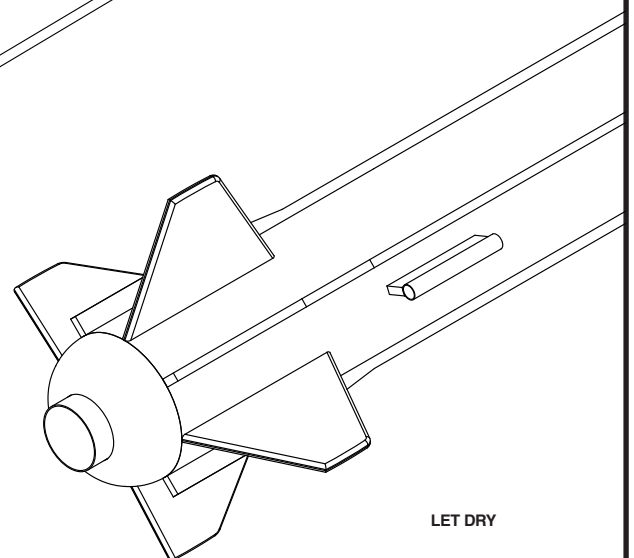


INSTALL ENGINE MOUNT

1. Use balsa scrap or stick to apply glue as shown.

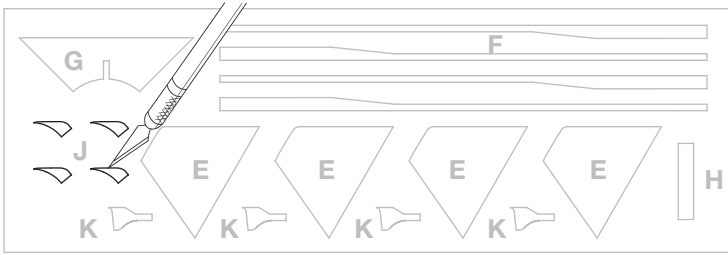


2.

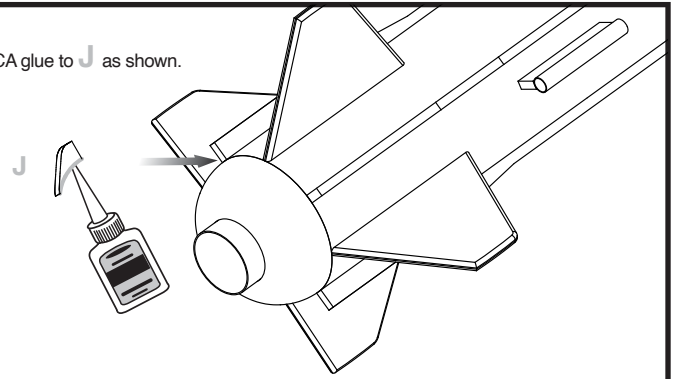


ATTACH SMALL DETAILS

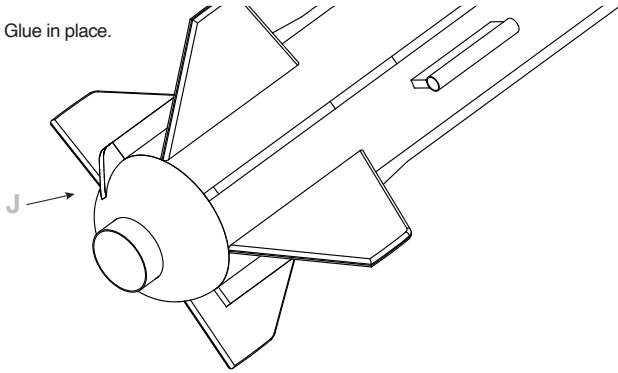
1. Carefully remove **J** with hobby knife.



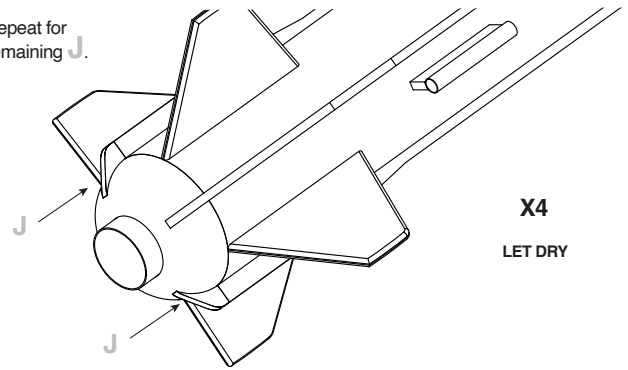
2. Apply CA glue to **J** as shown.



3. Glue in place.

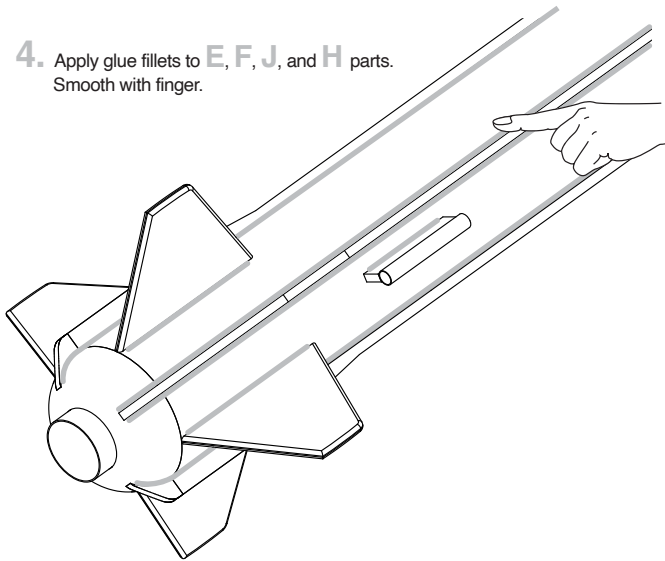


4. Repeat for remaining **J**.



X4
LET DRY

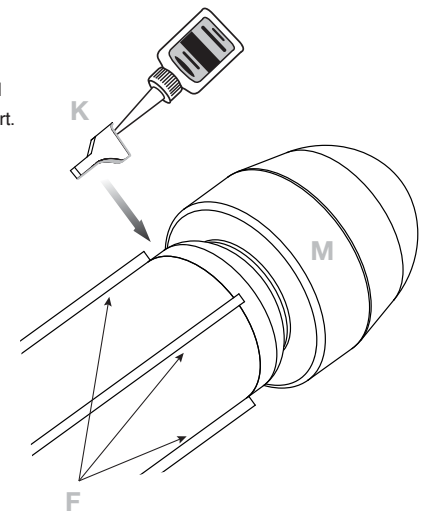
4. Apply glue fillets to **E, F, J,** and **H** parts.
Smooth with finger.



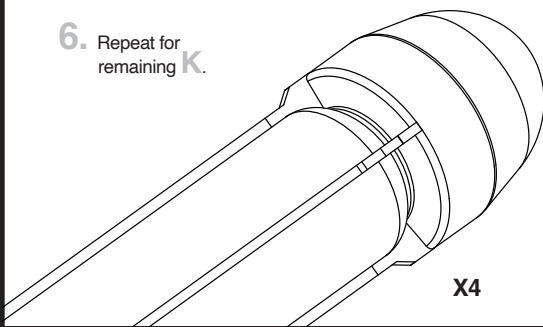
5. Insert **M** into front of model.
Apply CA glue to **K** as shown and align each **K** part with each **F** part.
Glue in place.



NOTE:
Apply first **K** part at edge of decal on **M** as shown.

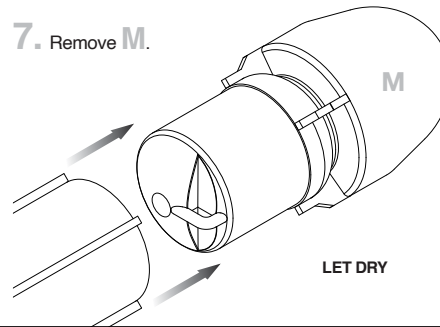


6. Repeat for remaining **K**.



X4

7. Remove **M**.

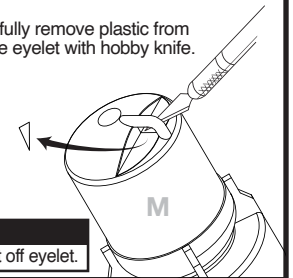


LET DRY

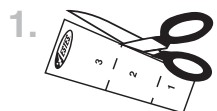
PREPARE NOSE CONE

1. Carefully remove plastic from inside eyelet with hobby knife.

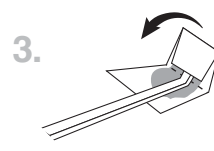
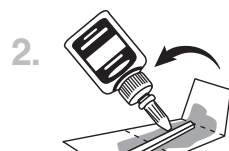
NOTE:
Do not cut off eyelet.



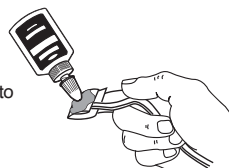
ATTACH SHOCK CORD



NOTE:
Cut from page 2.



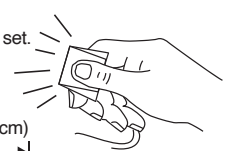
5. Apply glue to shock cord mount.



2" (5.1 cm)

Glue shock cord mount to the inside of body tube.

4. Hold until set.

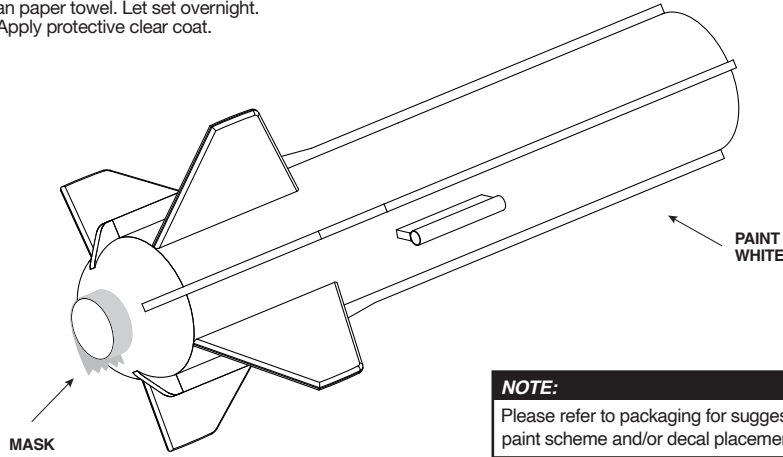


7. 2" (5.1 cm)

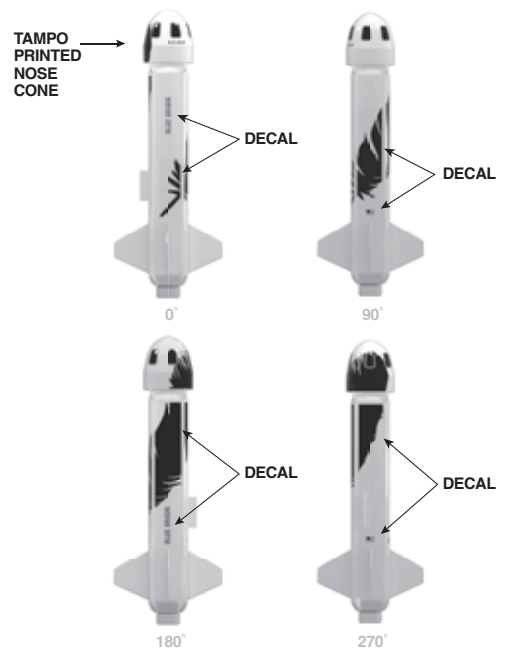
Hold until set, let dry.

ROCKET FINISHING

1. Cover engine mount end with masking tape.
2. Spray rocket with white or gray primer, let dry. Lightly sand as needed. Paint rocket white and let dry completely.
3. Apply decals after paint is dry.
4. Cut decals from sheet, trimming close to edge.
5. One at a time, place in warm water until decal curls and begins to relax.
6. Remove and position on rocket, sliding decal away from backing material.
7. Blot with clean paper towel. Let set overnight.
7. OPTIONAL: Apply protective clear coat.

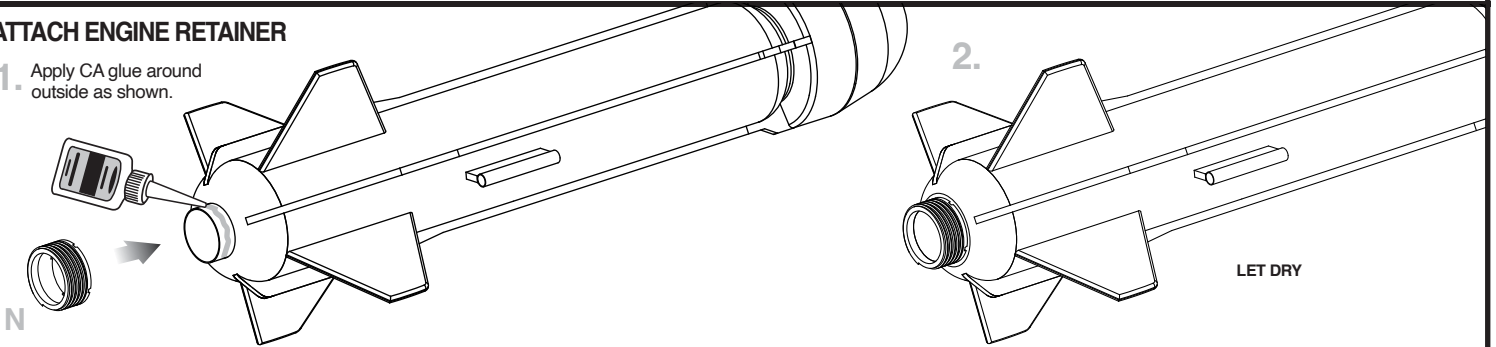


NOTE:
Please refer to packaging for suggested paint scheme and/or decal placement.

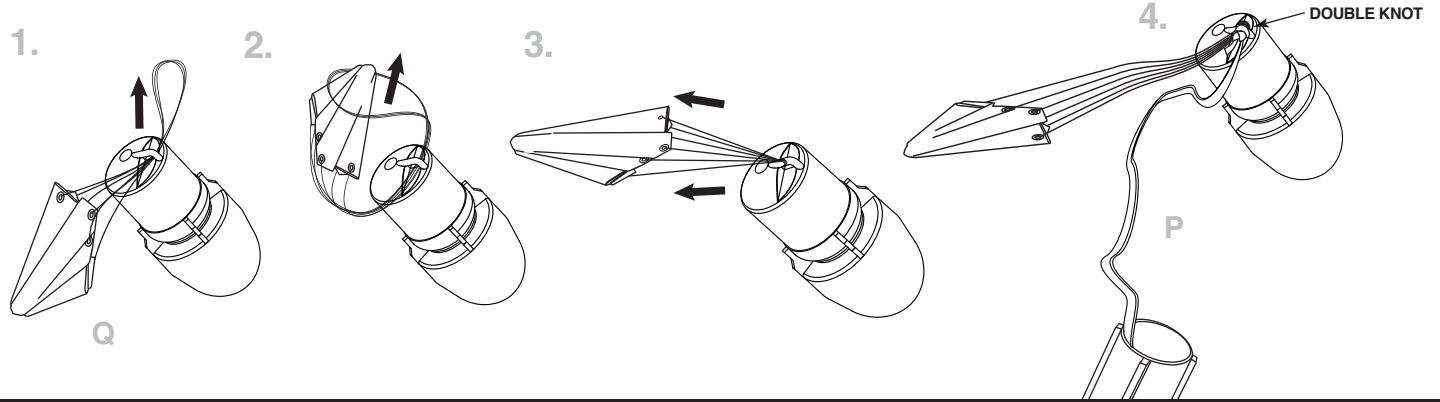


ATTACH ENGINE RETAINER

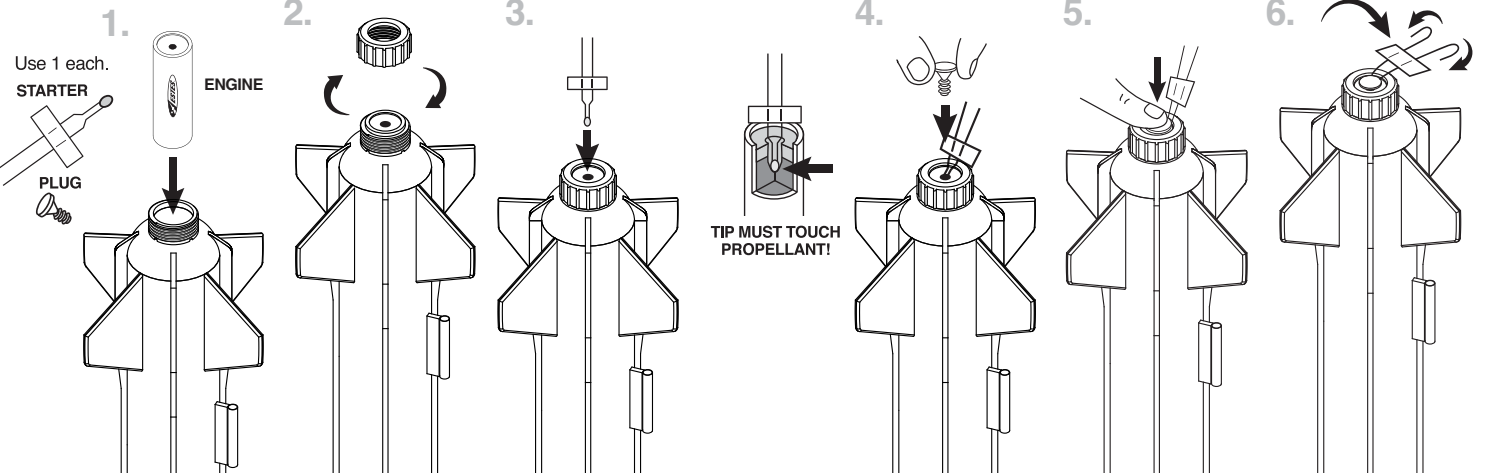
1. Apply CA glue around outside as shown.



ATTACH PARACHUTE AND SHOCK CORD

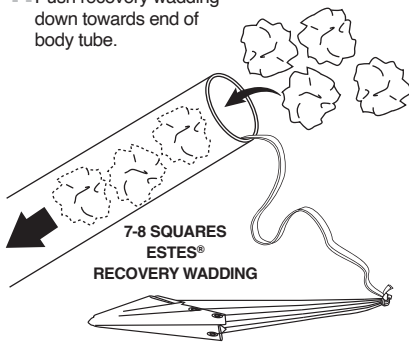


PREPARE ENGINE

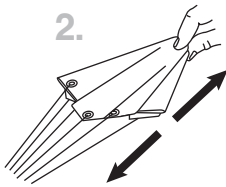


PREPARE FLIGHT RECOVERY

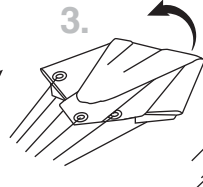
1. Push recovery wadding down towards end of body tube.



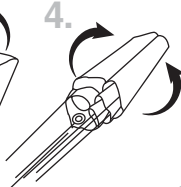
2.



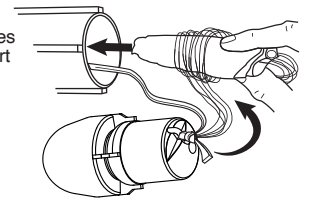
3.



4.

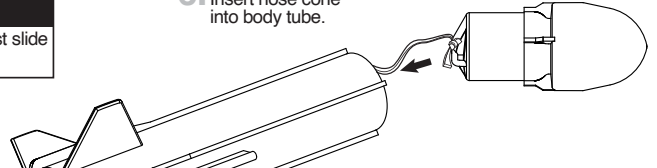


5. Wrap shroud lines loosely and insert parachute into body tube.



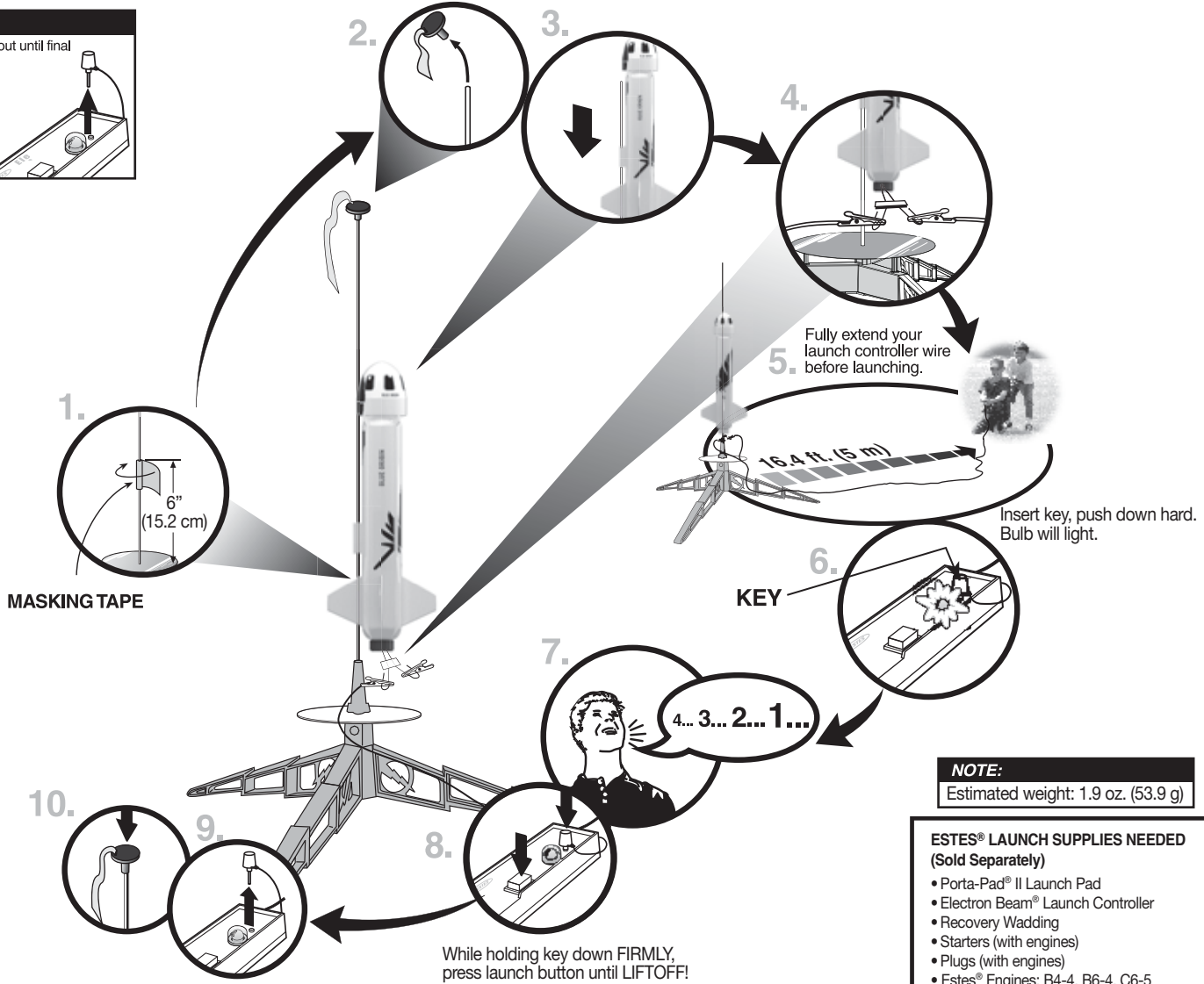
NOTE:
Recovery wadding and parachute must slide easily into body tube. If too tight, redo.

6. Insert nose cone into body tube.



COUNTDOWN AND LAUNCH

NOTE:
Key always out until final countdown!



NOTE:
Estimated weight: 1.9 oz. (53.9 g)

- ESTES® LAUNCH SUPPLIES NEEDED (Sold Separately)**
- Porta-Pad® II Launch Pad
 - Electron Beam® II Launch Controller
 - Recovery Wadding
 - Starters (with engines)
 - Plugs (with engines)
 - Estes® Engines: B4-4, B6-4, C6-5

PRECAUTIONS



NAR SAFETY CODE



NO DRY GRASS OR WEEDS

PRE-LAUNCH CHECK For safety, never launch a damaged rocket. Check the rocket's body, nose cone and fins. Also, check the engine mount, recovery system and launch lug(s). Repair any damage before launching the rocket.

FLYING YOUR ROCKET Choose a large field (500 ft. [152 m] square) free of dry weeds and brown grass. The larger the launch area, the better your chance of recovering your rocket. Football fields and playgrounds are great. Launch only with little or no wind and good visibility. Always follow the National Association of Rocketry (NAR) SAFETY CODE (enclosed).

MISFIRES TAKE THE KEY OUT OF THE CONTROLLER. WAIT ONE MINUTE BEFORE GOING NEAR THE ROCKET. Disconnect the micro-clips and remove the engine. Take the plug and starter out of the engine. A burned starter means the starter tip was not touching engine propellant. Install a new starter; be sure the tip is touching propellant inside the engine. Push the plug in place. Repeat steps under Countdown and Launch.

